

EU Pollinator Week, Brussels 30/11/2023

EU Pollinator Hub

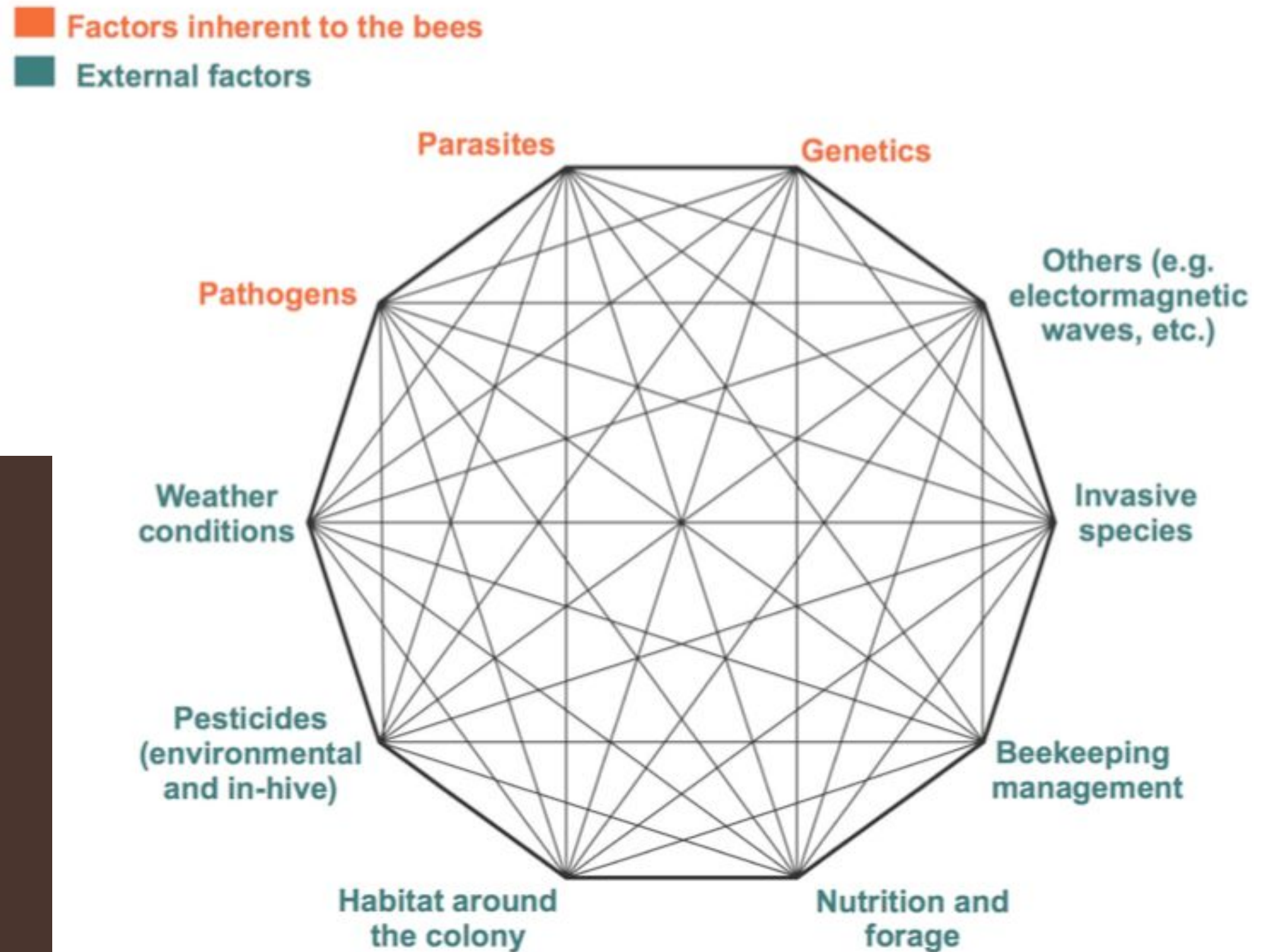
Collective approach to understand pollinator trends and threats
and provide data analytical service to society





Why a Pollinator Hub?

Pollinators are environmental animals. To understand what happens to them, we need to bring together many pieces of information generated by different actors, with different Data expertise.





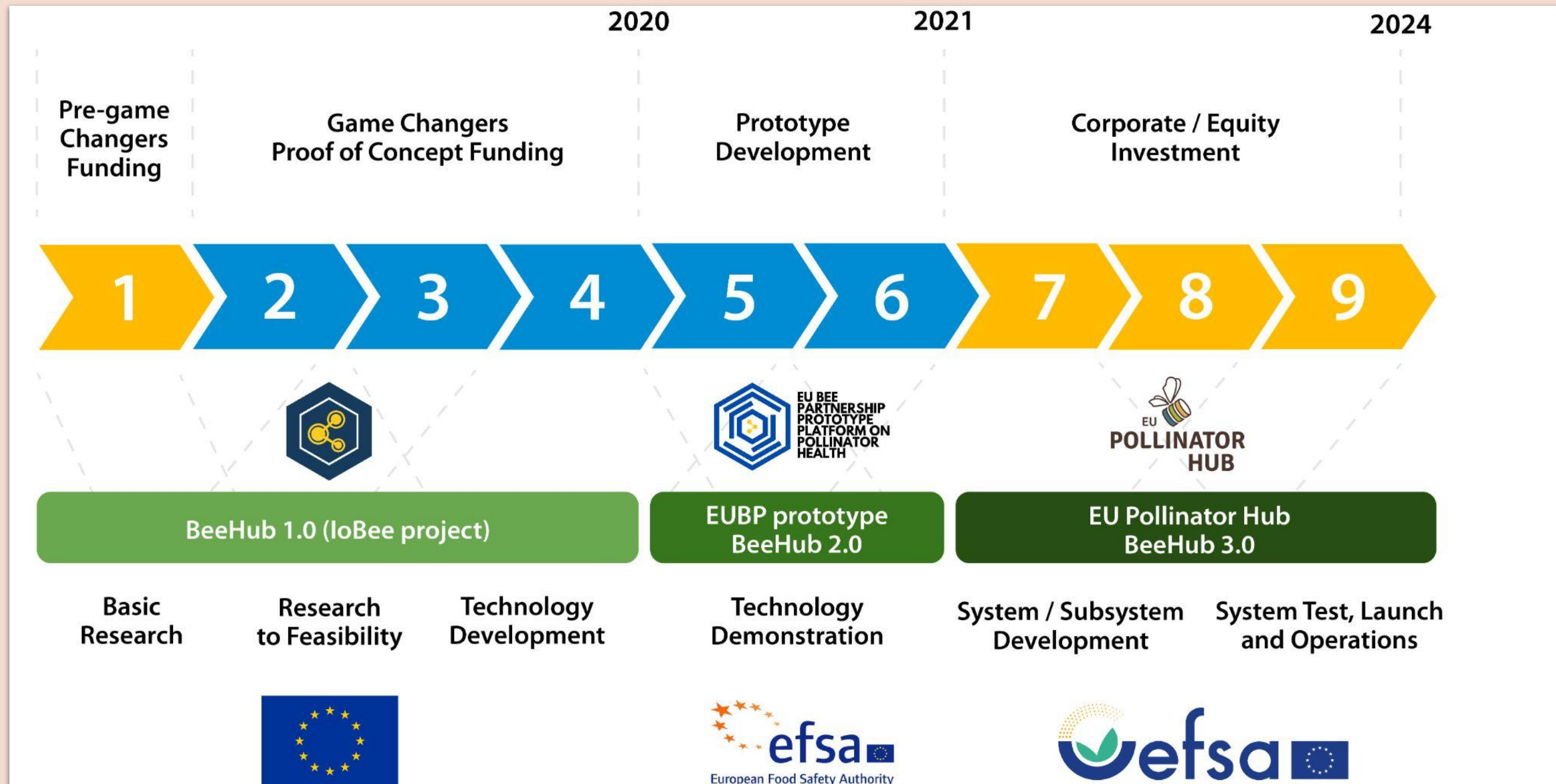
About EU Pollinator Hub

- Infrastructure allowing users bringing observations and data together, making sense of them
- Data quality check and Data curation
- Transforming raw data into valuable information for decision making
- Collective approach of the pollinator community
- Operative from February 2024 (now looking for beta testers)





About EU Pollinator Hub



Steering Committee





Scientific data

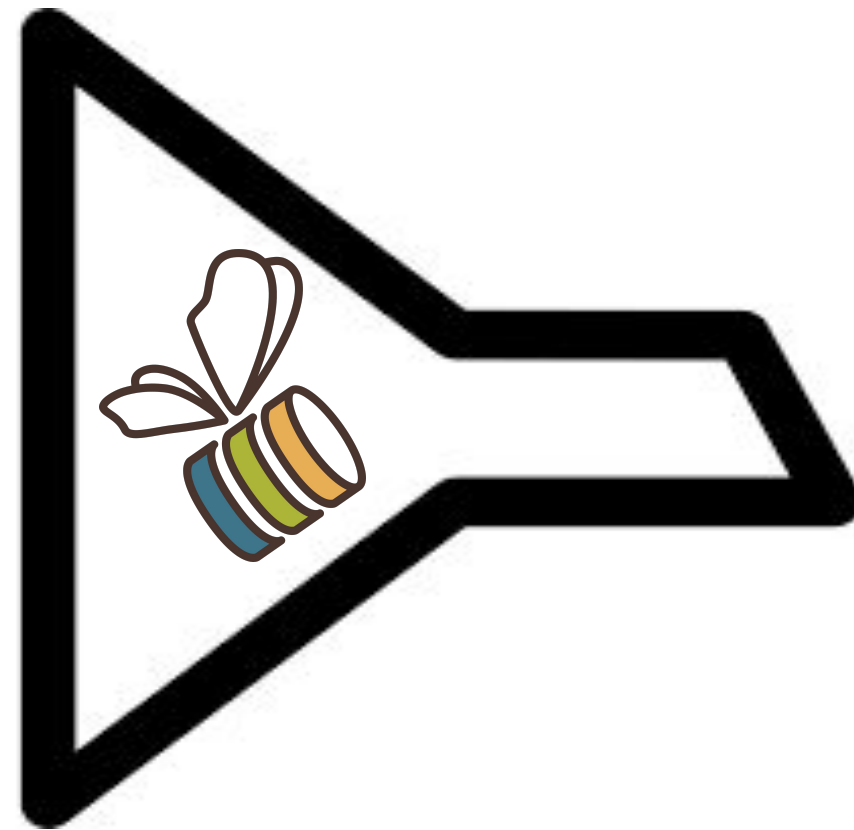
Process of standardization and peer review (quality validation)



Institutional data



Industry's data



Beekeepers' data

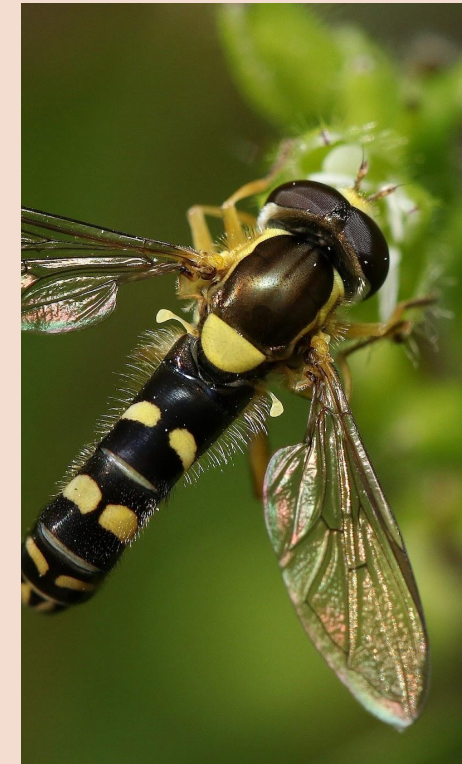
FAIR Data

- Findable
- Accessible (but protecting Authorship and Privacy)
- Interoperable
- Reusable



Findable

- Data Searching Tool
- EUPH Data Map
- Categorisation of terms available in the Dictionary



Accessible

- EUPH's processed data and Code are Open Source
- Data Providers decide on their data sharing and licenses

EUPH is FAIR



Interoperable

- API for EUPH process data
- Development service of APIs and interfaces



Reusable

- Documentation of data via metadata
- Standardised data
- Two-step data quality check



Standardisation tool



Dictionary Dashboard

This dashboard allows you, the user to see terms and their definitions and translations, shared with the platform. Keep in mind, the dictionary is still in development, features might be missing or non-functional. Be patient and report any issues to: [Gitlab](#)

GLOSSARY LIST

GLOSSARY TREE

TRANSLATOR

In collaboration with the Apimondia WG 12 - creating a standard for beekeeping terminology

The Pollinator Hub provides a collective standardisation tool that the BeeXML will use

Uses other existing standardised terminology (ISO, Taxonomy, etc.)



EUPH goes beyond data sharing

Integrates any stakeholder data

Provide data analytical service to society

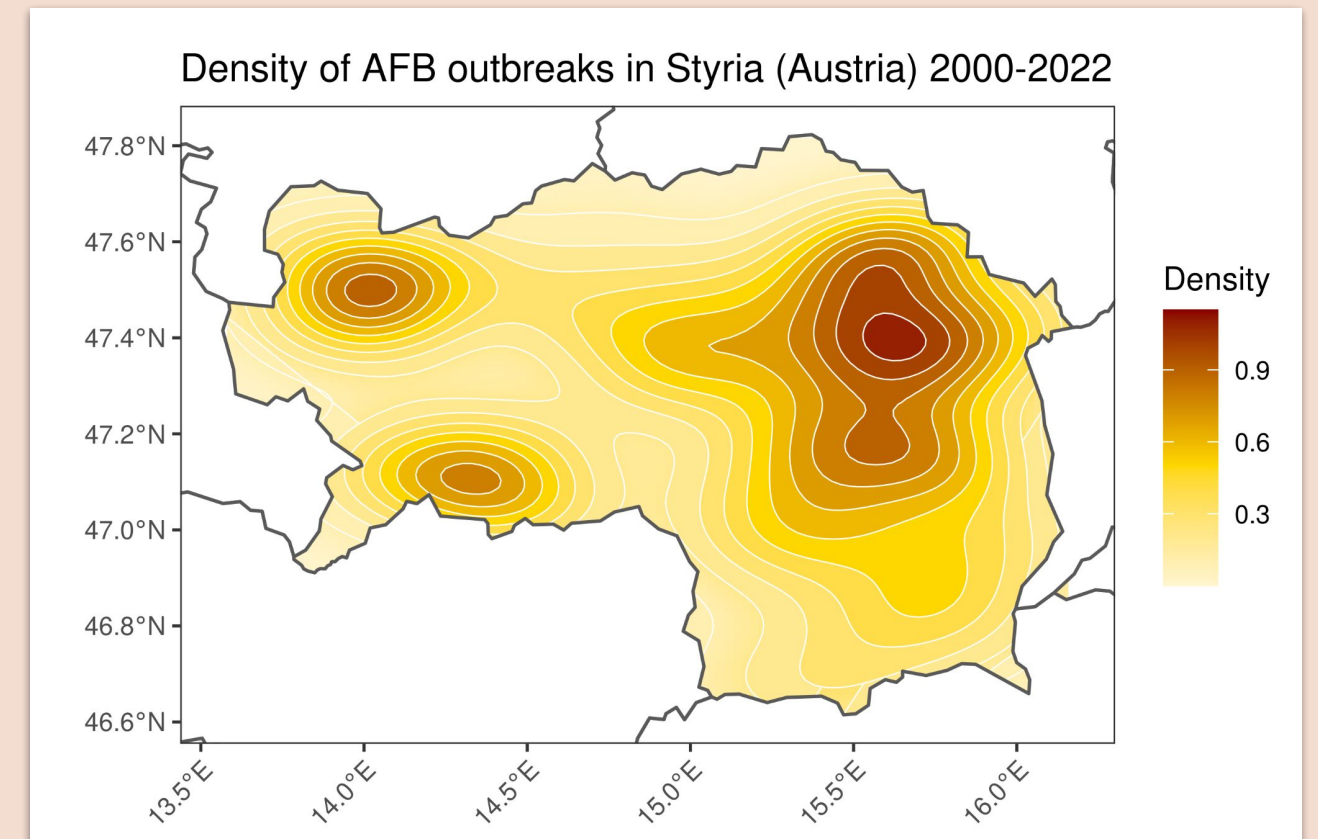
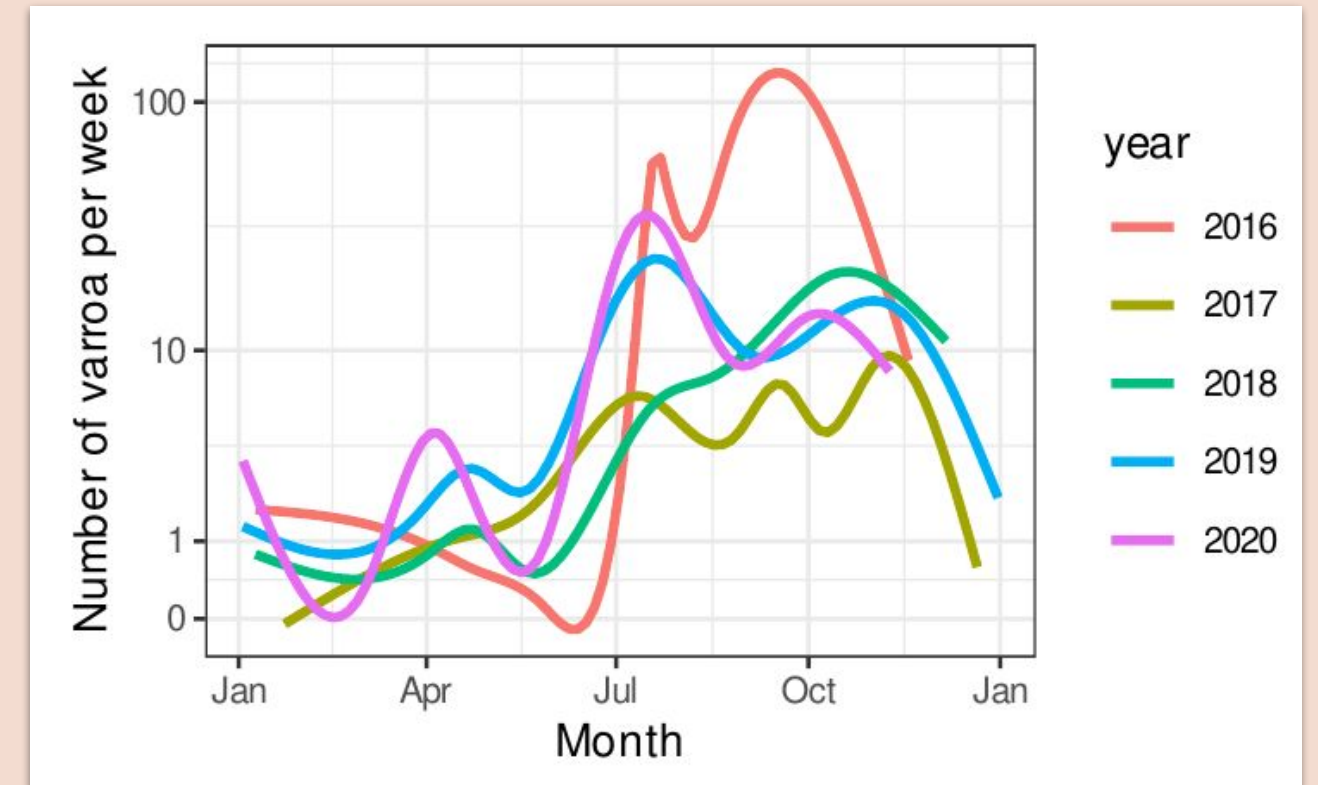
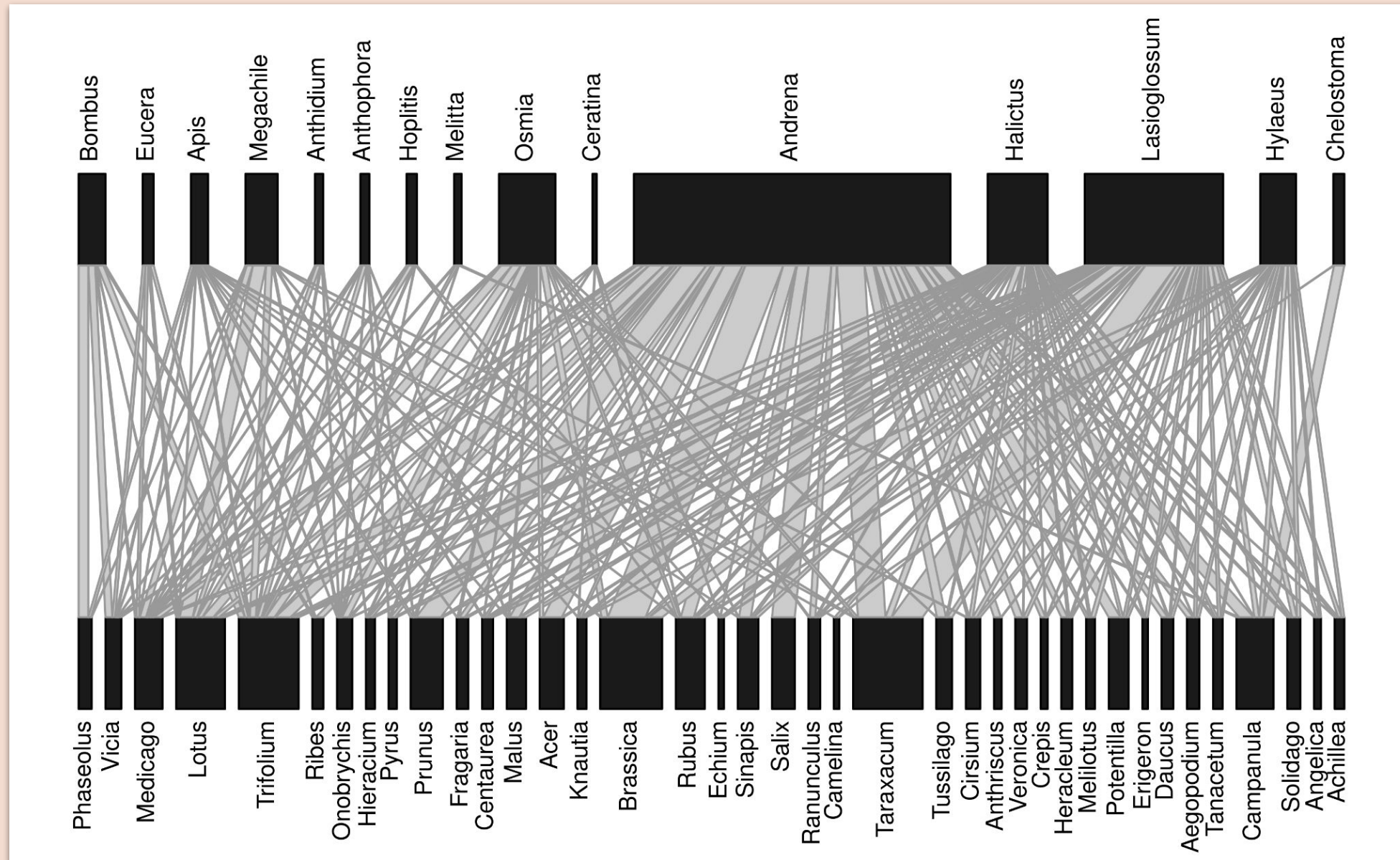
Helps democratising pollinator related data for decision making





Uses

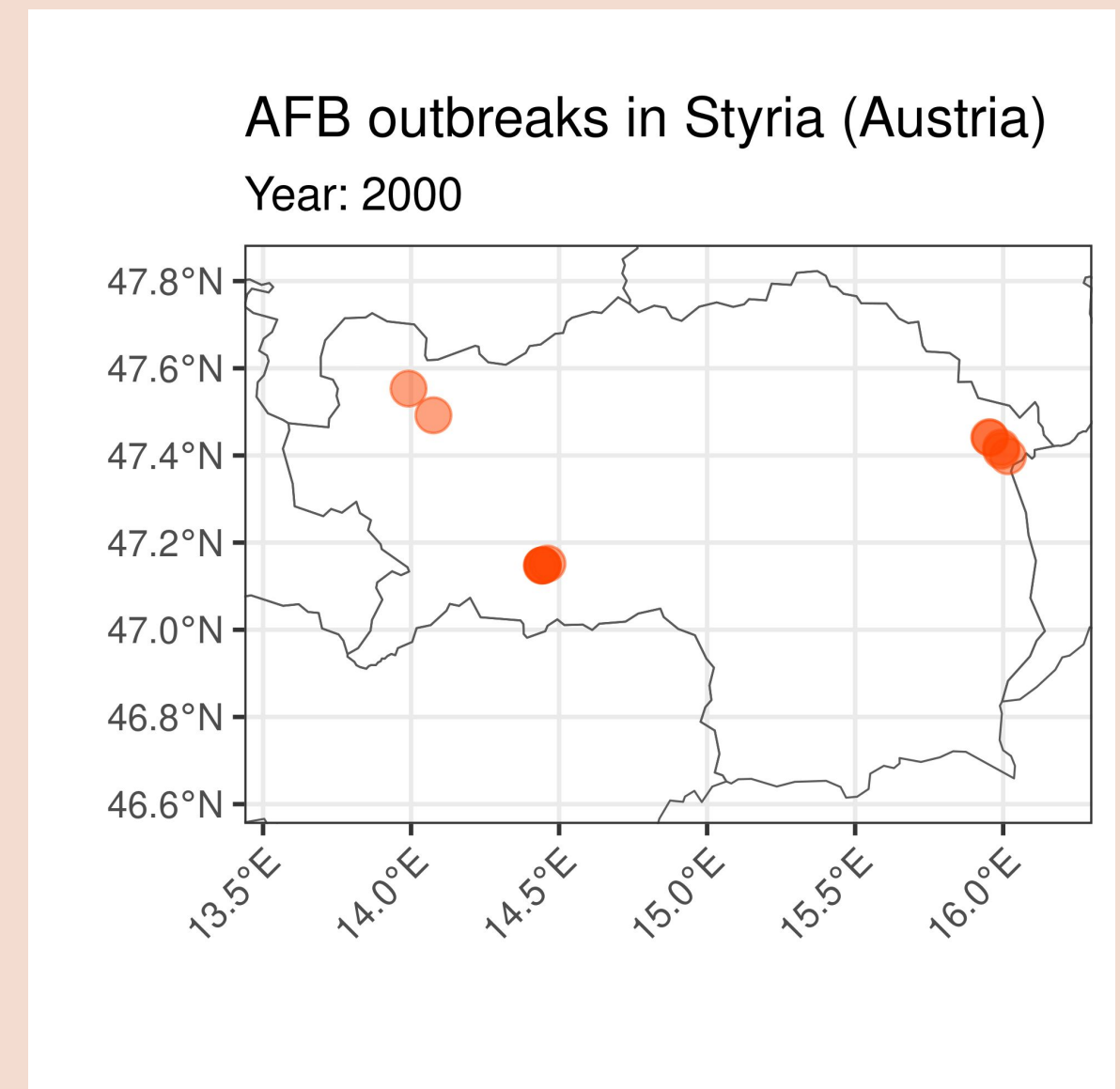
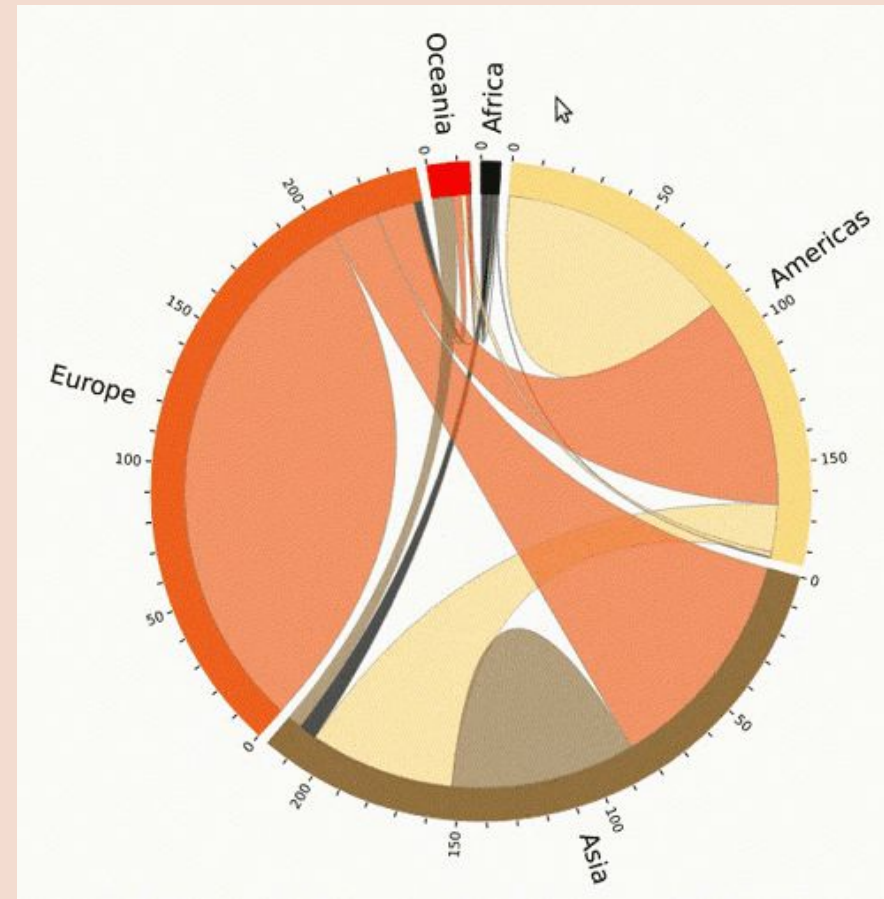
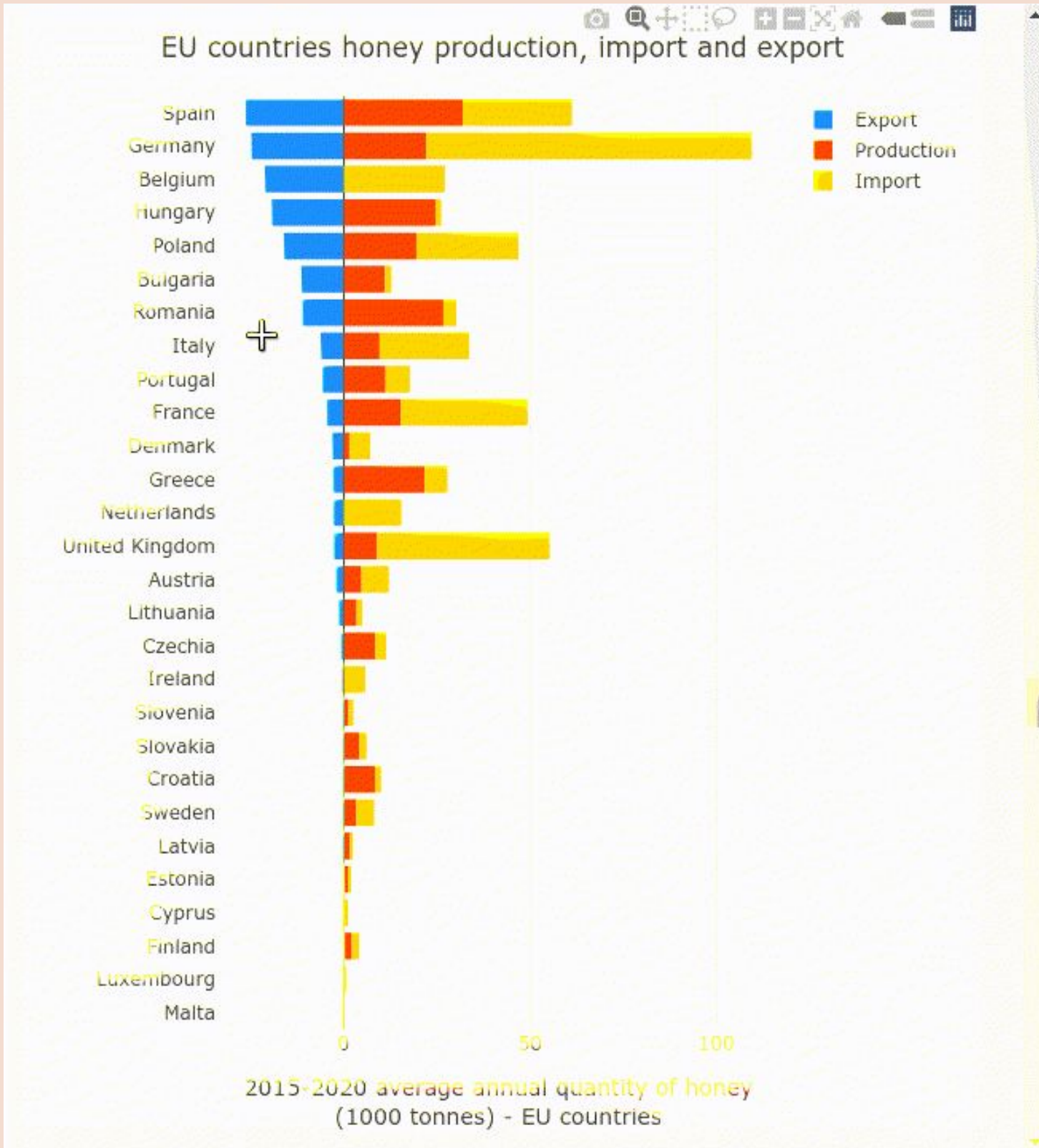
Examples of static graphs





Examples of dynamic graphs

Uses



Warning : this is a prototype working on a temporary uncleaned version of the dataset.

Chose the measure ⓘ

Net weight (kg) ▾

Chose the year

2014 ▾

Maximum value per scale

This table displays the maximum weight value (column Max) for each scale/beehive and the date at which this maximum was reached. You can filter the table to chose a subset of data to show on the graph and on the map.

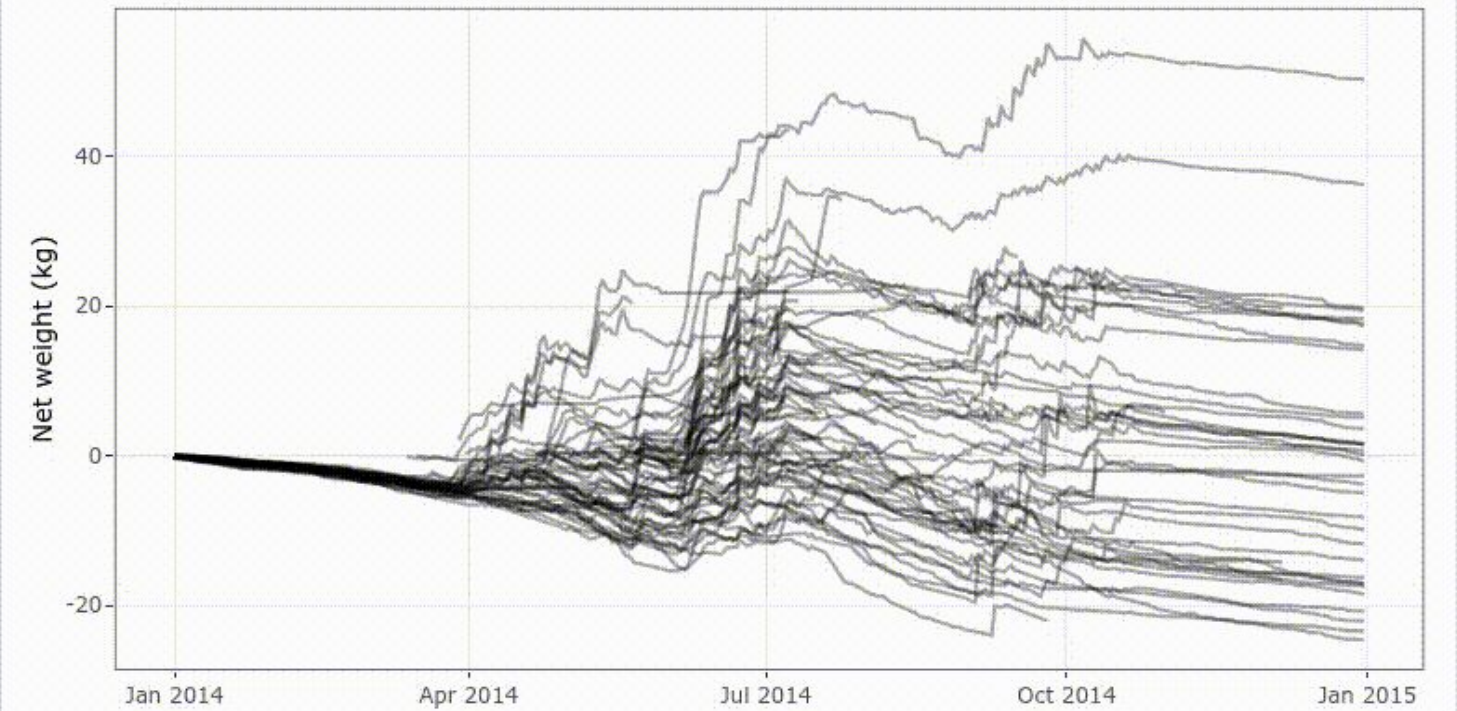
Show 10 ▾ entries

Search:

ScaleID	Max	Date	Region	Locality	Area
All	All	All	All	All	All
SC247	55.7	2014-10-06	Osrednjeslovenska	KRIM	KUREŠČEK
SC239	43.5	2014-07-07	Savinjska	GORNJI GRAD	
SC241	40.1	2014-10-17	Osrednjeslovenska	IŠKA VAS	KRIM
SC283	34.6	2014-07-20	Primorsko-notranjska	ZAHOD	GOTENIŠKA GORA
SC250	31.4	2014-07-08	Osrednjeslovenska	KUNČ	KOČEVSKI ROG
SC269	27.9	2014-09-12	Podravska	RUŠKO POHORJE	VZNOŽJE
SC257	27.8	2014-07-08	Goriška	MENIŠIJA	LOGAŠKA PLANOTA
SC254	25.4	2014-09-29	Pomurska	MALI BAKOVCI	PREKMURJE
SC265	25.1	2014-10-04	Savinjska	PREBOLD	VRANSKO
SC275	25	2014-06-23	Podravska	SLOVENSKE GORICE	LENART

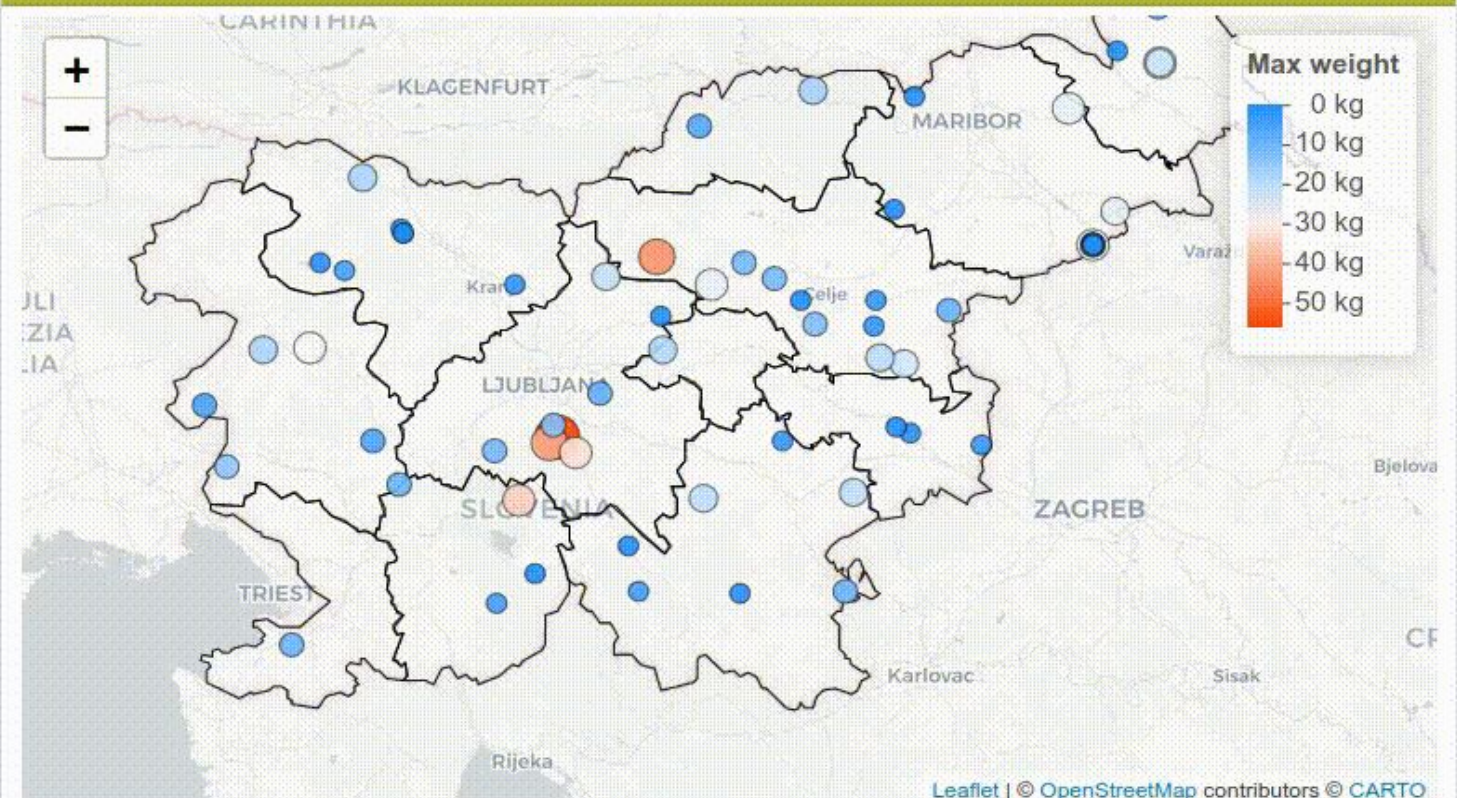
Showing 1 to 10 of 66 entries Previous 1 2 3 4 5 6 7 Next

Graph



NB : double click on the graph to reset.

Map



NB : the positions on the map are approximate.



What's Next?

Register to our Online free Training Sessions:

14 Dec 2023 - Using the data of the EU Pollinator Hub

25 January 2024 - Getting the best out of my data with the EU Pollinator Hub

<https://www.bee-life.eu/events>

Goes live from March 2024



Noa Simon Delso, Gregor Sušanj, Gilles San
Martin, Santiago Otalora, Michael Rubinigg

Thank you for your attention

<https://pollinatorhub.eu>

<https://bee-life.eu>

info@bee-life.eu

@BeeLifeEU

